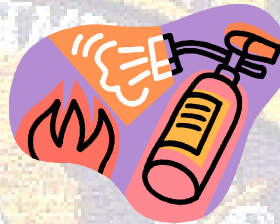


PORTABLE FIRE EXTINGUISHERS

When used properly, portable extinguishers can help save lives and property. They are also useful in containing small fires until the fire department arrives.

Portable home fire extinguishers **ARE NOT** designed to extinguish large or spreading fires. Even against small fires, they are useful only under certain conditions. Before using a portable fire extinguisher, be sure the fire department has been notified. A few things to remember are.



FIRE EXTINGUISHERS ARE DESIGNED FOR:

- Small Fires
- Confined fire areas
- People who have read the directions earlier

FIRE EXTINGUISHERS ARE NOT DESIGNED FOR:

- Large Fires
- Rapidly growing fires
- People who are unfamiliar with fire extinguisher use

Fire Extinguishers come in different classes. Know what is on fire and use the proper extinguisher.



A	B	C	D
Ordinary Combustibles	Flammable Liquids	Electrical Equipment	Flammable Metals
Wood	Grease Oil		Magnesium
Paper			
Plastics			
Cloth			

WARNING! Using a fire extinguisher on the wrong class of fire can **MAKE THE FIRE WORSE!**

WHEN A FIRE OCCURS ALWAYS:

- First notify 911, and sound any alarms
- Evacuate immediately
- Rescue anyone in danger

NEVER...

- Attempt to extinguish a large or rapidly growing fire
- Fight fires with out an escape route
- Fight fires if your are in doubt
- Assume the fire is out. Wait until the area is inspected by the fire department.

YOU CAN TRY TO USE THE FIRE EXTINGUISHER IF YOU...

- Know the fire is small and confined
- Keep a clear escape route. Don't let the fire get between you and the exit
- Stay low, below the smoke
- If you have any doubt, leave the area
- Leave if the fire grows out of control
- Close door to contain fire before you leave
- Wait for the fire department's permission before you re-enter the area

